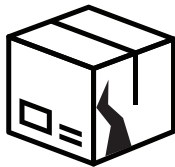


## IMPORTANT



### Before you open any boxes:

- Make sure you have received the product you ordered.
- Make sure the colour is correct.
- Do not open boxes if you are not sure if you have received the product you have ordered.



### Visible damage:

- Take pictures of any damaged boxes / product.
- Take note of delivery date and time.
- Take note of product condition at time of delivery.
- Do not open boxes with visible damage.
- Report (in writing) any visible damage to the seller immediately.



### Storing boxes:

- Boxes must be stored on a flat, level and smooth surface.
- Boxes must be stored in a dry location.
- Boxes must be stored in a consistent temperature between 10°C and 30°C.
- Boxes must not be stored in direct sunlight.



### Important and helpful information:

- Please read our helpful installation guide.
- Additional documents (warranty, maintenance and cleaning guide and relevant testing) are available upon request from the seller.



### We recommend:

- We recommend that the person performing the installation has suitable qualifications and relevant experience to install this flooring.
- If you are not 100% sure or if you are not suitably qualified or if you don't have the relevant experience then please don't do the installation.

## Installation Guide:

- Please read the following installation guide to help you with your flooring installation.
- This guide is general in nature. It is not specific to you, your location or site conditions.
- This guide covers installation of several different products with Valinge 5G click.
- Please remember that this is a guide only and is intended to assist in the installation of this product.
- Please remember that it is not possible to cover all possibilities, site conditions, site requirements.
- If you are unsure or require assistance please contact a professional / licensed installer with relevant installation experience.

## Floor Preparation Guide:

- Ensure the floor is clean and clear.
- Ensure the floor is firm and stable.
- Ensure that the floor is flat, 3mm across 3m is usually acceptable.
- Apply a suitable moisture barrier that is appropriate to the site conditions (if needed).

## Pre-Installation:

- Inspect the product. Make sure the product is in good condition.
- Defective product should be removed and not installed. Notify the seller of any defective product immediately.
- Some planks with small damage may be used in 'off-cut positions' where full planks are not required.
- Once the product has been installed it is deemed that the product has been accepted by the purchaser / owner.

## Stair Installation:

- When installing this product on stairs, the installation must be as 'direct stick' or 'glue down'. The flooring must be glued to the step and the riser.
- Underlay cannot be used. We recommend the use of professional / licenced installers because there are many considerations in this installation process.

## Expansion Gaps:

- We recommend a 1mm or 2mm gap around the perimeter.

## Cutting of Aqua Stone SPC Flooring:

- You can use the 'score and snap' method for short and long side.
- You can use a hand saw, drop saw, jig saw, table / bench saw.

## Please note:

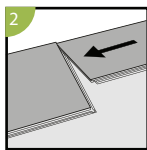
- It is the sole responsibility of the product owner to determine if the appropriate steps have been taken in the preparation of the floor / surface prior to installation.
- It is the sole responsibility of the product owner to determine if the site environmental conditions are suitable for the product purchased.
- It is the sole responsibility of the product owner to inspect the product and determine if the product is in good condition.
- Once the product has been installed it is deemed that the product has been accepted by the product owner.
- Claims made for labour costs or any other costs associated with the replacement of boards after they have been installed will not be accepted.
- We do not recommend that this product be used in areas such as showers, balconies or outdoor areas.



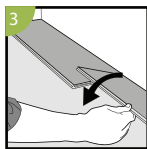
## Installation Instructions for SPC



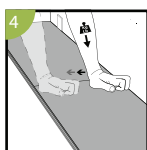
**1** First plank, first row  
Place a spacer with predicted thickness to the left and position the panel against the wall.  
Later, after 3 rows, you can easily position the flooring against the front wall with predicted spacers.



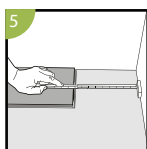
**2** Second plank, first row  
Place this panel gently close to the short end of the first one.



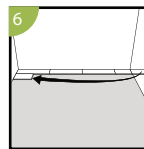
**3** When folding down it is important to start from the corner closest to the previous row, folding down towards the center, and continue towards the opposite long side. During the fold down, make sure the panels are close to each other.



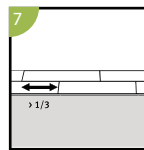
**4** Afterwards press slightly along the short end just installed.



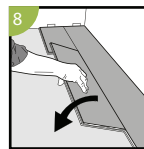
**5** At the end of the first row, put a spacer to the wall and measure the length of the last plank to fit.



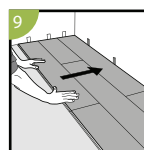
**6** Second row  
First plank min length 400 mm. Put a spacer against the left wall.



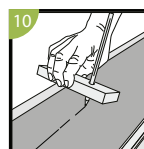
**7** Staggered joint distance i.e. minimum distance between short ends of panels in parallel rows shall not be less than the given length.



**8** Second plank second row  
Place the panel gently and close to the short end of the previous panel and fold it down in a single action movement.

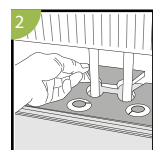
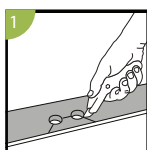


**9** After 2-3 rows  
Adjust the distance to the front wall by placing spacers.



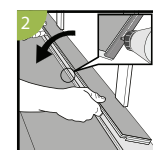
**10** Last row (and perhaps also first row).  
Minimum width 50 mm. Place a spacer to the wall before measuring. Make a simple drawing tool (piece of wood with a hole) and mark the panel along the wall. Cut the panels lengthwise including the flexible tongues.

### Installation around radiator/heating pipes



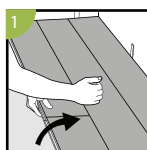
**1** Drill holes two times larger than the diameter of the pipes. Remove a piece of the panel with a utility knife. Put the panel on one side of the pipes and the removed piece on the other side.

### When angling is not possible



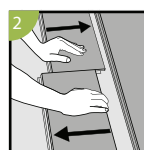
**2** Remove the vertical locking part of the strip with a chisel, put applicable glue on the strip and push the planks horizontally together. Place some spacers between last board and the wall.

### Dismantling panels



**1** Separate the whole row by carefully lifting up and release the whole row.

Fold up the row and release the whole long side.



**2** Disassemble the panels by sliding the short ends horizontally.

Never fold up a panel, as this damage the profile.